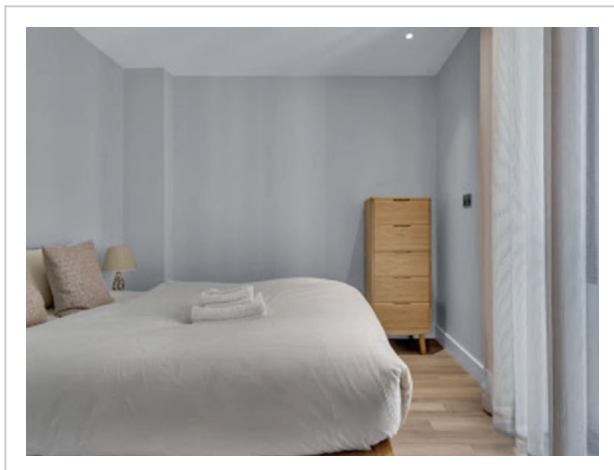
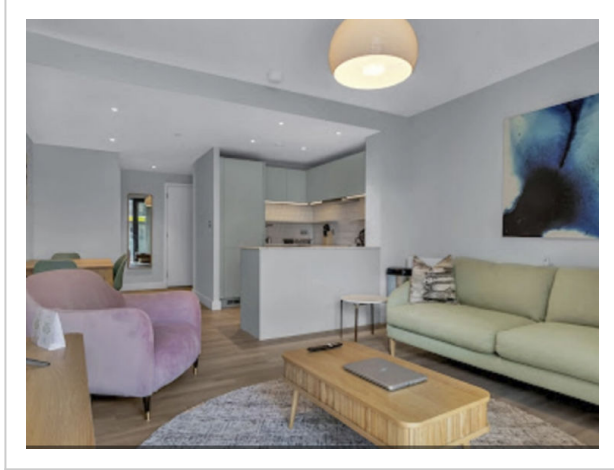


Olympic Way Apt in Wembley Park,London West End,Greater London,United Kingdom,HA9 0HS



Address: London West End,Greater London,United Kingdom,HA9 0HS

Bedrooms: 2 Bathrooms: 2

Outside

Modern apartment block. In the centre of Wembley Park, in the district Brent, North West London, excellent location: right in the centre but still quiet, traffic calmed area. In the complex: reception, lounge, internet access, fitness room (extra). Roof terrace, central heating system, washing machine, tumble dryer. Room cleaning weekly (included). Public car park, extra. Shop, grocery, supermarket 350 m, shopping centre 300 m, restaurant 380 m, bar 200 m, bakery 200 m, café 100 m, pub garden 200 m, bus stop "Wembley Arena" 200 m, railway station "Liverpool Street Station" 15 km, underground station "Wembley Park Station" 570 m. Nearby attractions: Wembley Stadium 200 m,

Wembley Designer Outlet 500 m, Wembley Arena 200 m. Please note: baby equipment on request (extra). Object suitable for 4 adults. The apartment is located in a zone with limited traffic. The photograph shows a typical example. The holiday properties may differ in living space, floorplan, equipment and furnishing.

Inside

"Olympic Way Apt in Wembley Park", 3-room apartment 70 m2. Object suitable for 4 adults. Modern and tasteful furnishings: open living room with TV, cable TV and flat screen. Exit to the balcony. 2 double bedrooms, each room with 2 double beds and shower/WC. Small, open kitchen (oven, dishwasher, 4 ceramic glass hob hotplates, toaster, kettle, microwave). Facilities: washing machine, dryer, iron, children's high chair, baby cot (extra), hair dryer. Internet (WiFi, free). Please note: suitable for families. TV only EN. The property is one of a type of property or apartment.

Amenities:

- | | |
|---------------------------|-------------------------|
| • Double Glazed Windows | • Modern |
| • Green Space Garden | • Washingmachine |
| • Led Bulbs | • Familyfriendly Winter |
| • No Disposable Tableware | • Winedine |
| • Public Transport | • Nightlife Winter |
| • Recycling Station | • Electric Iron |
| • Water Efficient Toilets | • Fire Extinguisher |
| • Central | • Fridge |
| • Cleaning | • Hair dryer |
| • Dishwasher | • Heating |
| • Tumbler | • Interior Modern |
| • Fitness | • Internet |
| • Metropolis | • Kettle |
| • Microwave | • Open Kitchen |
| • Oven | • Balcony |
| • Reception | • TV |
| • Familyfriendly Summer | • Stove |
| • Shower | • Toaster |
| • Nightlife Summer | • Wlan |
| • Terrace | |
-