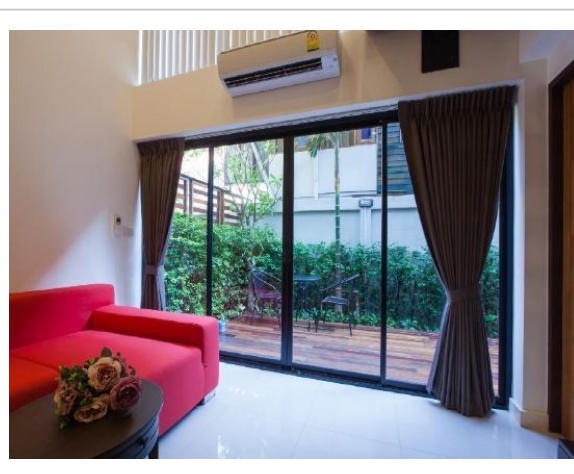
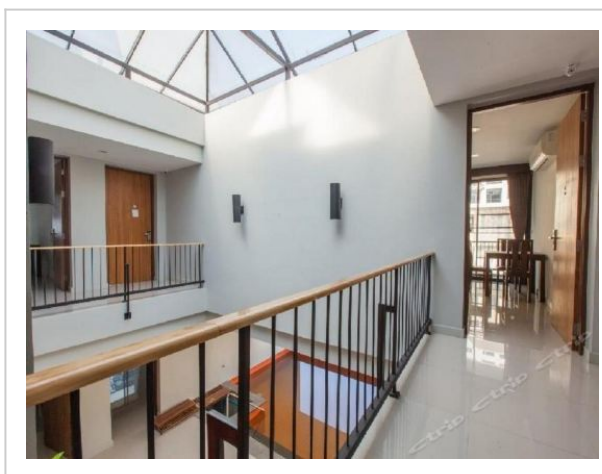
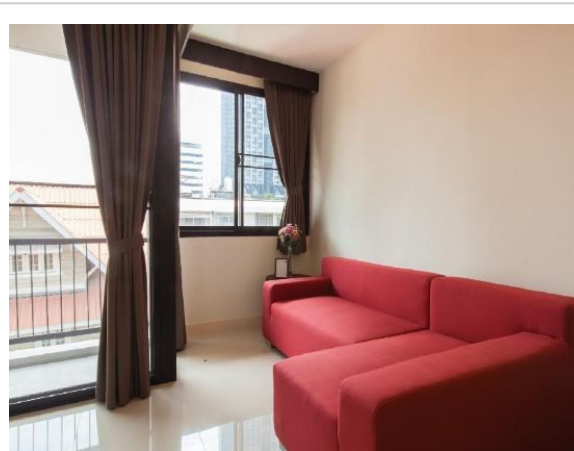
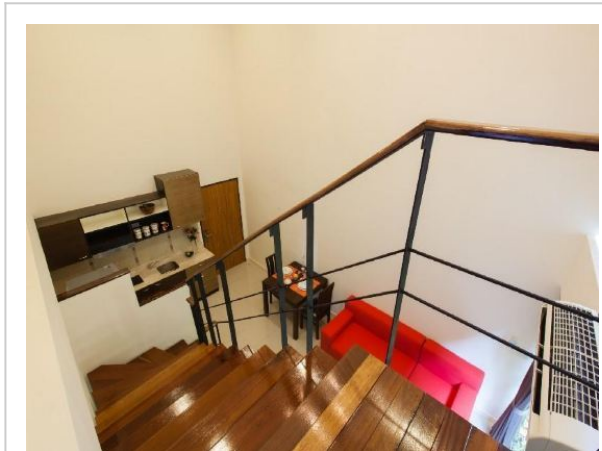


The Pad Silom--Apartment



Address: 40/2 Old Convent, Khwaeng Silom, Khet Bang Rak, Bangkok

Bedrooms: 5 Bathrooms: 2

Location

A great option for family vacation: apartment «The Pad Silom» is located in Bangkok. This apartment is located in 5 km from the city center. You can take a walk and explore the neighbourhood area of the apartment — Chong Nonsi, Lumpini Park and MBK Center.

At the apartment

Free Wi-Fi is available on the territory. Ask for more information when checking in. Specially for tourists who travel by car, there's a parking zone. Swimming fans are going to enjoy a pool. Accessible for guests with disabilities: the elevator helps them to go to the highest floors. There are

other services available for the guests of the apartment. For example, a laundry.

Room amenities

The room is warmly decorated and has everything you need to have a rest after a long eventful day. There is a shower and a TV. The room equipment depends on its category.

Amenities:

- | | |
|---------------------------------------|---------------------|
| • Air conditioning | • Bathtub |
| • Elevator/lift | • Shower |
| • Smoking areas | • Wardrobe/Closet |
| • Smoke-free property | • Linens |
| • Garden | • Mosquito Net |
| • Outdoor furniture | • Toiletries |
| • Upper floors accessible by elevator | • Laundry |
| • Non-smoking rooms | • Telephone |
| • Fridge | • Microwave oven |
| • Family room | • Kettle |
| • Cable TV | • Free Wi-Fi |
| • Flat-screen TV | • Swimming Pool |
| • Shower/Bathtub | • Beach/pool towels |
-