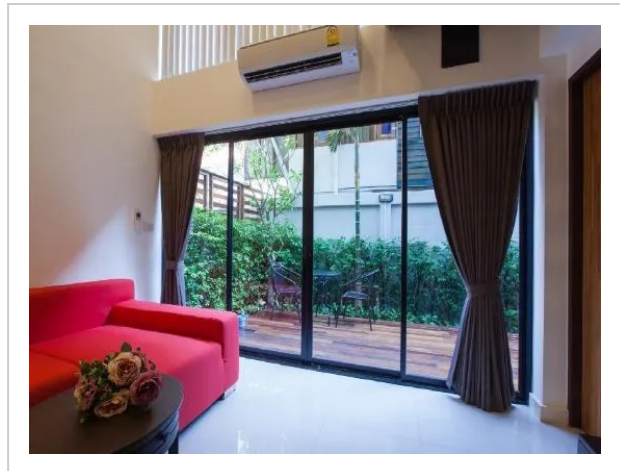
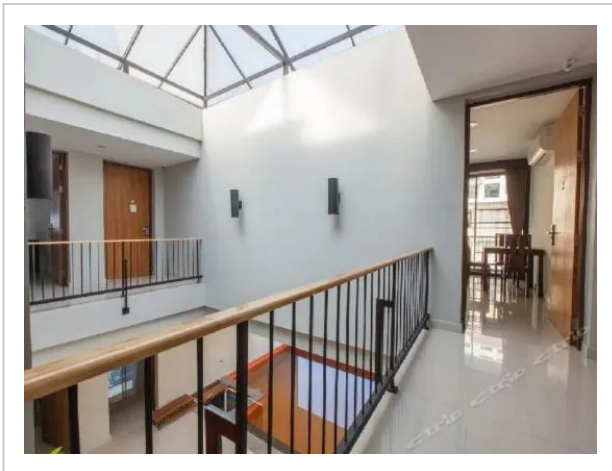
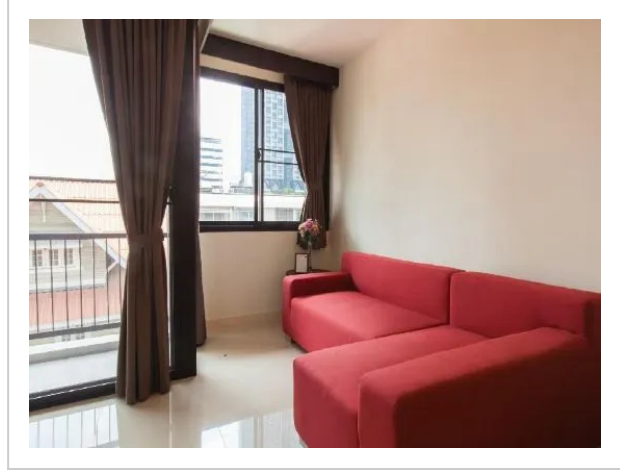
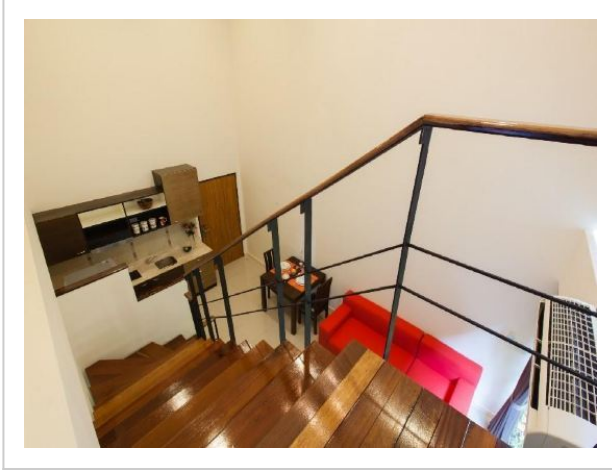


The Pad Silom, 40/2 Old Convent, Khwaeng Silom, Khet Bang Rak, Bangkok



Address: 40/2 Old Convent, Khwaeng Silom, Khet Bang Rak, Bangkok

Bedrooms: 5 Bathrooms: 2

Location

A great option for family vacation: apartment «The Pad Silom» is located in Bangkok. This apartment is located in 5 km from the city center. You can take a walk and explore the neighbourhood area of the apartment — Chong Nonsi, Lumpini Park and MBK Center.

At the apartment

Free Wi-Fi is available on the territory. Ask for more information when checking in. Specially for tourists who travel by car, there's a parking zone. Swimming fans are going to enjoy a pool.

Accessible for guests with disabilities: the elevator helps them to go to the highest floors. There are other services available for the guests of the apartment. For example, a laundry.

Room amenities

The room is warmly decorated and has everything you need to have a rest after a long eventful day. There is a shower and a TV. The room equipment depends on its category.

Amenities:

- Air conditioning
 - Elevator/lift
 - Smoking areas
 - Smoke-free property
 - Garden
 - Outdoor furniture
 - Upper floors accessible by elevator
 - Non-smoking rooms
 - Fridge
 - Family room
 - Cable TV
 - Flat-screen TV
 - Shower/Bathtub
 - Bathtub
 - Shower
 - Wardrobe/Closet
 - Linens
 - Mosquito Net
 - Toiletries
 - Laundry
 - Telephone
 - Microwave oven
 - Kettle
 - Free Wi-Fi
 - Swimming Pool
 - Beach/pool towels
-