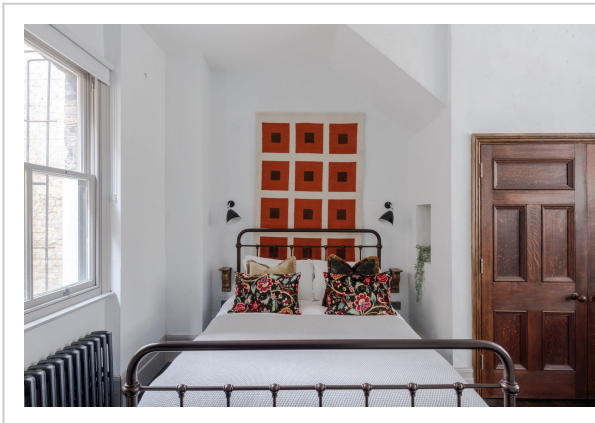
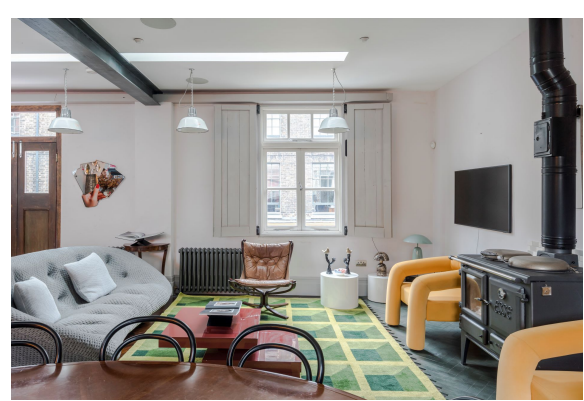


5 Bedroom Apartment The Borough Bridge



Address: The Borough Bridge

Bedrooms: 5 Bathrooms: 3

The Borough Bridge

Boasting an unparalleled location with Borough Market on its doorstep, this home is an incredible base for a London stay. A delightful terrace looks out over the market and offers stunning views of The Shard – it's a splendid spot for a few drinks in warm weather. This house has everything you might need for a comfortable stay, including two reception spaces, one with a fully-equipped open-plan kitchen. There's plenty of room for everyone to spend time together, but there are quieter corners for cosy moments too.

Amenities:



- Bathtub
 - Hair dryer
 - Toiletries
 - Coffee Maker
 - Dishwasher
 - Fridge
 - High Chair
 - Kitchen
 - Kitchen Utensils
 - Microwave
 - Oven
 - Stove
 - Laptop Friendly Workspace
 - Wi fi
 - Central Heating
 - Outdoor Seating
 - Patio / Terrace
 - Pets Allowed
 - Carbon Monoxide Detector
 - Child Friendly
 - Smoke Detector
 - TV
 - Cot / Crib
 - Dryer
 - Iron
 - Washing machine
 - Private Entrance
-