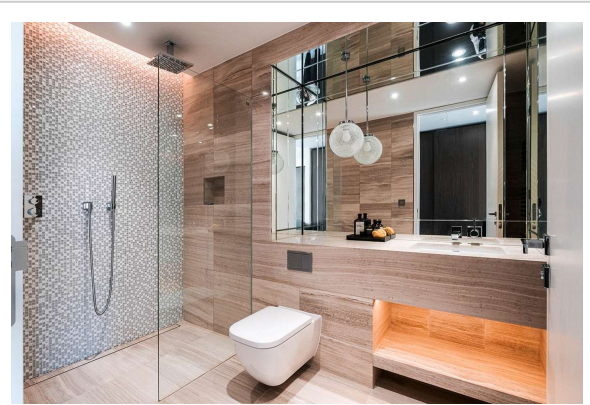
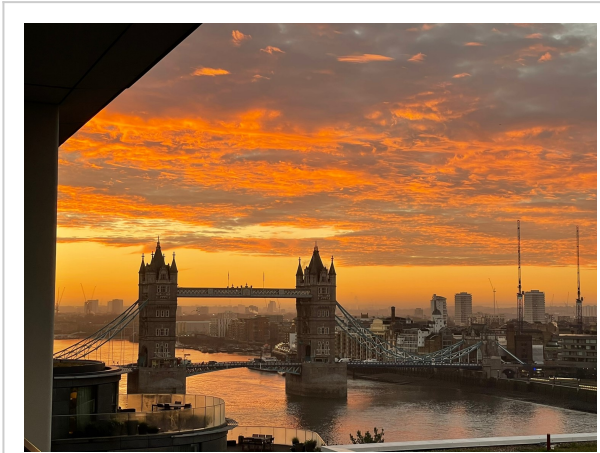
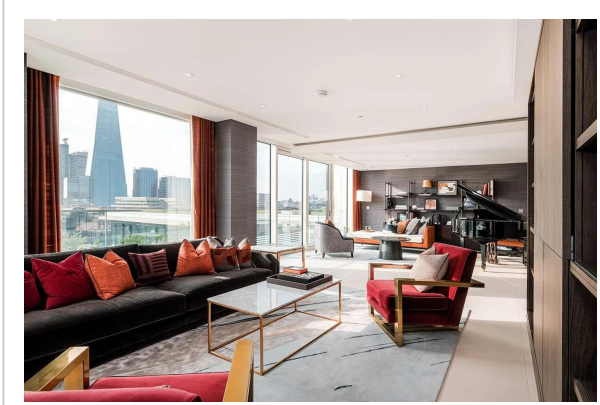


## 3 Bedroom Apartment Colours of London



**Address: Colours of London**

Bedrooms: 3 Bathrooms: 3

### Colours of London

Perched above the Thames and with views of the Shard and Tower Bridge, this London Bridge penthouse places you in the heart of the city. Inside this two-level home, you'll find elegant furnishings befitting the home's lofty position – we love the bespoke kitchen, and the floor-to-ceiling windows are a nice touch that soaks the home in sunlight. Outside, the terrace lets you enjoy a fantastic skyline view with your morning coffee. The Tower of London is next door, and several tube stations are nearby should you wish to explore further afield. On London's infamous drizzly days, you can stay cosy inside with the underfloor heating or head to the building's pool, sauna, cinema or gym.



**Amenities:**

- Wi fi
  - TV
  - Sonos
  - Library of Books
  - Board Games
  - Bathtub
  - Rain Shower
  - Luxury Toiletries
  - Sauna / Steam Room
  - Luxury Bedding
  - Hair dryer
  - Iron
  - Dishwasher
  - Microwave
  - Pod Coffee Machine
  - Cafetiere
  - Air conditioning
  - Central Heating
  - Underfloor Heating
  - Washing machine
  - Dryer
  - Lift Access
  - Access to Gym / Spa
  - Swimming Pool
  - Parking Available
  - Freezer
  - Kitchen
  - Ironing Board
  - Safe
  - Oven
  - Stove
  - Kitchen Utensils
  - Toaster
  - Fridge
  - Hangers
  - Shared Pool
  - Indoor Pool
  - Patio / Terrace
  - Laptop Friendly Workspace
  - Secured Parking
  - Private Parking
  - Free Parking On Premises
  - Balcony
  - Desk
  - 24 Hour Front Desk
  - Alarm System
  - Blender
  - Carbon Monoxide Detector
  - Coffee Maker
  - Drying Rack
  - Fire Extinguisher
  - Juicer
  - Kettle
  - Outdoor Seating
  - Smoke Detector
  - Private Washing Machine
  - Private Dryer
-